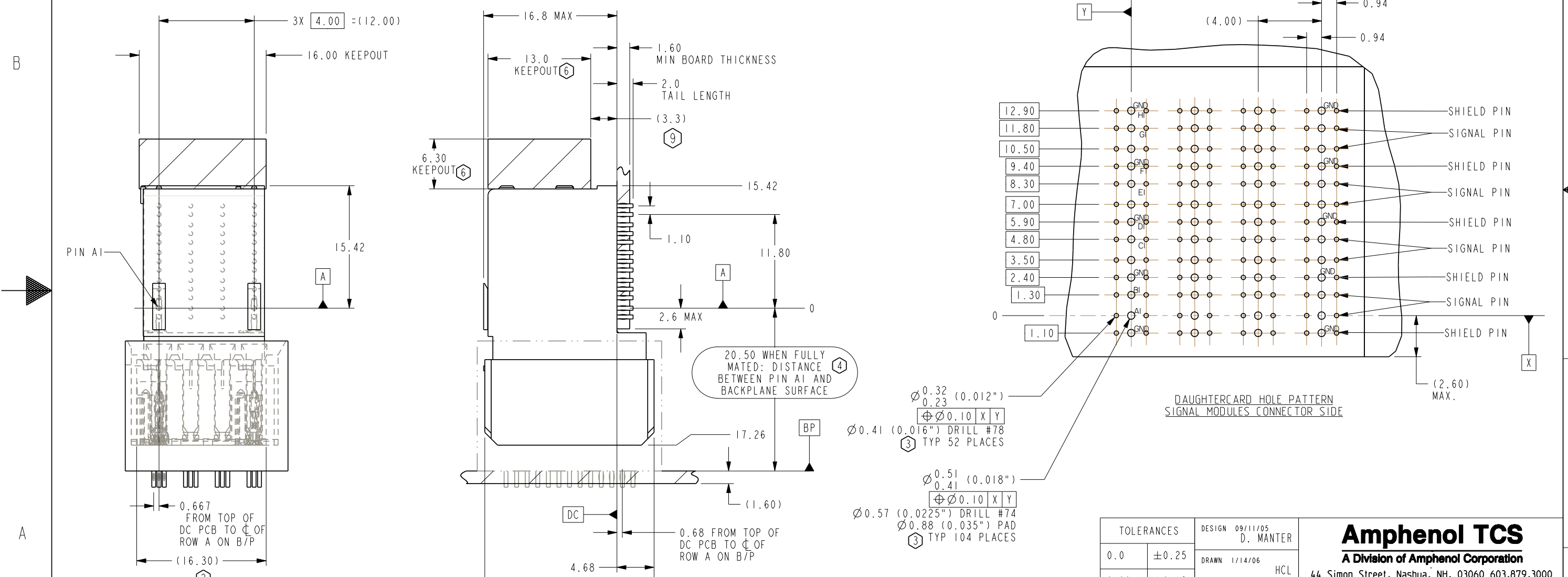


ZONE	REV	SCR NUMBER	DESCRIPTION	BY	DATE	APPROVED
ALL	01		NEW RELEASE	HCL	1/14/06	D.MANTER
	02		REVISED KEEPOUTS	HCL-SD	07/19/06	DUNHAM
	03		UPDATED FOR WEB	HCL-BS	02/13/07	DUNHAM

TABLE I	
PART NUMBER	FINISH
376-5102-735	30uIN GOLD PLATING, Sn Pb
376-5102-732	50uIN GOLD PLATING, Sn Pb
376-5102-769	30uIN GOLD PLATING, Pb FREE
376-5102-768	50uIN GOLD PLATING, Pb FREE
376-5102-773	30uIN GOLD PLATING, Pb FREE SPECIAL



- NOTES:
- INTENDED FOR LAYOUT PURPOSES.
  - USE 18.00MM NOMINAL FOR DAUGHTERCARD LAYOUT.
  - STATED PAD SIZE MAY REQUIRE FILLLETING. SEE TB-2196 FOR ROUTING GUIDELINES.
  - NOMINAL DIMENSIONS FOR FULLY SEATED CONNECTOR.
  - REFER TO TB-2140 FOR MATRIX PRODUCT SPECIFICATIONS.
  - FOR CONNECTOR REPAIRABILITY, USE KEEP OUT ZONE. REFER TO TB 2142.
  - GROUND ROWS ARE SHOWN. ALL OTHER ROWS ARE SIGNAL ROWS.
  - USE 10.00MM SPACE FOR ADJACENT 4X4 WAFER ASSY.
  - KEEP IN ZONE FOR LOW PROFILE COMPONENTS

INTERPRET PER ASME Y14.5M  
CODE IDENT 31413

UNLESS OTHERWISE SPECIFIED DIMENSIONS ARE IN MM, DECIMAL MAKER IS PERIOD  
**CUSTOMER USE DRAWING**

TOLERANCES		DESIGN 09/11/05 D. MANTER	<b>Amphenol TCS</b> A Division of Amphenol Corporation 44 Simon Street, Nashua, NH, 03060 603.879.3000
0.0	±0.25	DRAWN 1/14/06 HCL	
0.00	±0.13	CHK XX/XX/XX DUNHAM	
0.000	± -	APVD XX/XX/XX D.MANTER	
ANGLES		± -	TITLE DAUGHTERCARD PCB CROSSBOW
PART NO.		SEE TABLE I	REV
DRAWING NO.		C-376-5102-500	REV 03
ProePART		P1098-BOARD-DM324-01--4X4 Q1098-C376-5102-500-4X4 .dwg	1.44 1.7
SIZE B	SCALE 4/1	SHEET 1 OF 1	

DRW NO. C-376-5102-500  
SH 1  
REV 03