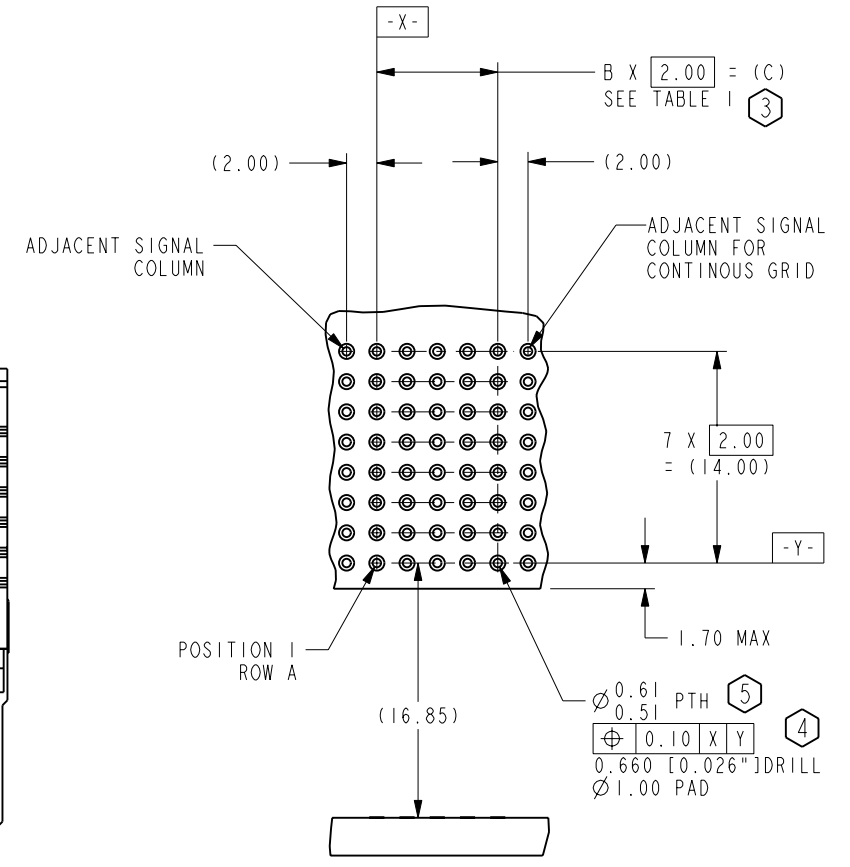
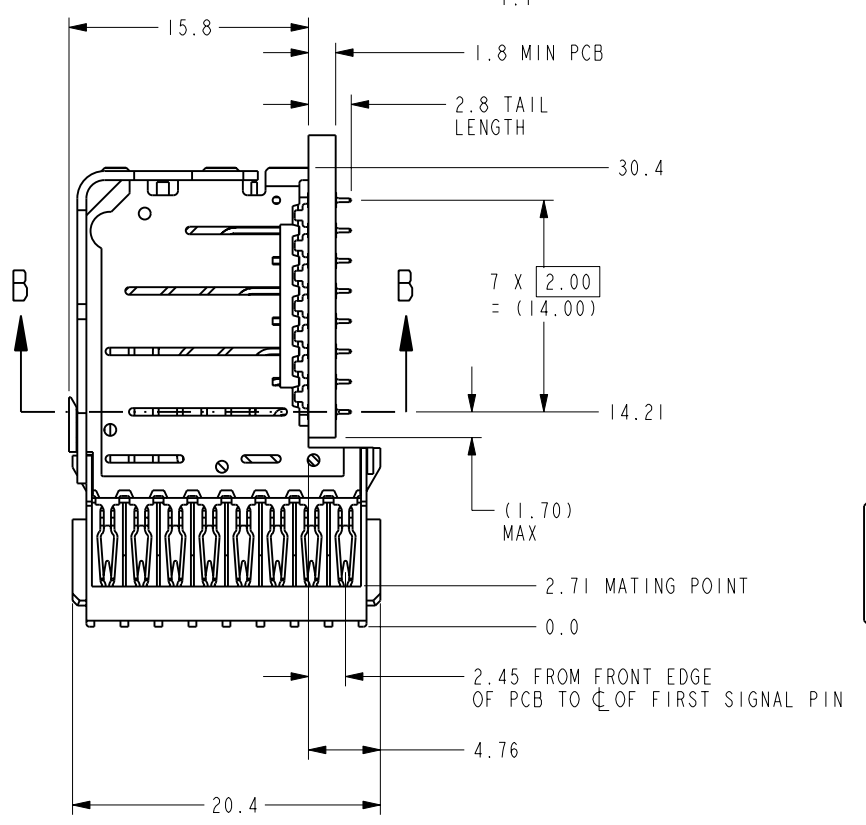
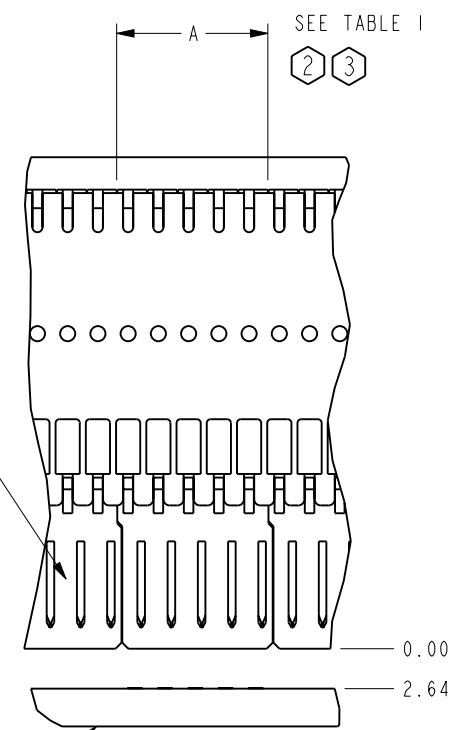
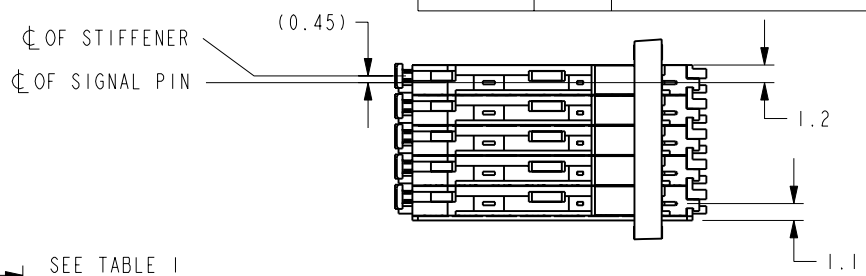
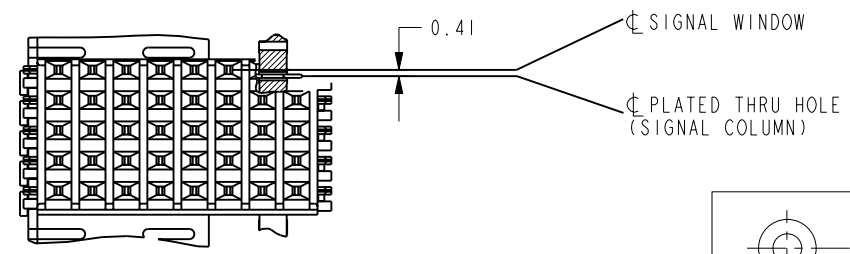


ZONE	REV	SCR NUMBER	DESCRIPTION	BY	DATE	APPROVED
	-	GRON-6DCKYM.VER01	NEW RELEASE	GKR	06/13/05	D.MANTER
	A	KLEC-6JVJDQ.VER01	ADDED DETAIL ON COMPONENT FINISHES FOR CLARIFICATION	HCL	12/12/05	K.LEBLANC
	B	KLEC-6W9PD4.VER01	MODIFIED TABLE 1	HCL-MS	12/11/06	K.LEBLANC



DETAIL A
L-SERIES CONFIGURATION
DAUGHTERCARD HOLE PATTERN
CONNECTOR SIDE



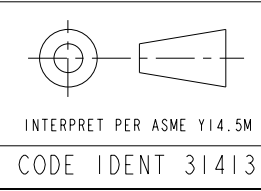
SECTION B-B

- NOTES:
- DIMENSIONS AND TOLERANCES ARE IN MILLIMETERS, INTENDED FOR LAYOUT PURPOSES ONLY AND SUBJECT TO CHANGE WITHOUT NOTICE.
 - USE 10.0 MM NOMINAL FOR DAUGHTERCARD LAYOUT.
 - MODULES MUST BE IN GROUPS OF 2 OR 5 (SEE TABLE 1).
 - SEE TB2040 FOR ROUTING GUIDELINES.
 - FOR HASL FINISHES ONLY, ϕ 0.61-0.495mm PTH SEE TB2040

TOLERANCES	DESIGN	4/3/03 D.MANTER
0.0	\pm 0.25	DRAWN 4/3/03 M.BOSWORTH
0.00	\pm 0.13	CHK 4/3/03 R.CHASE
0.000	\pm -	APVD 4/3/03 D.MANTER
ANGLES	\pm -	

UNLESS OTHERWISE SPECIFIED DIMENSIONS ARE IN MM, DECIMAL MAKER IS PERIOD

CUSTOMER USE DRAWING



Amphenol TCS
A Division of Amphenol Corporation
 44 Simon Street, Nashua, NH, 03060 603.879.3000

TITLE
 DAUGHTERCARD MODULE
 VHDM L-SERIES 8 ROW

PART NO. SEE TABLE 1
 REV

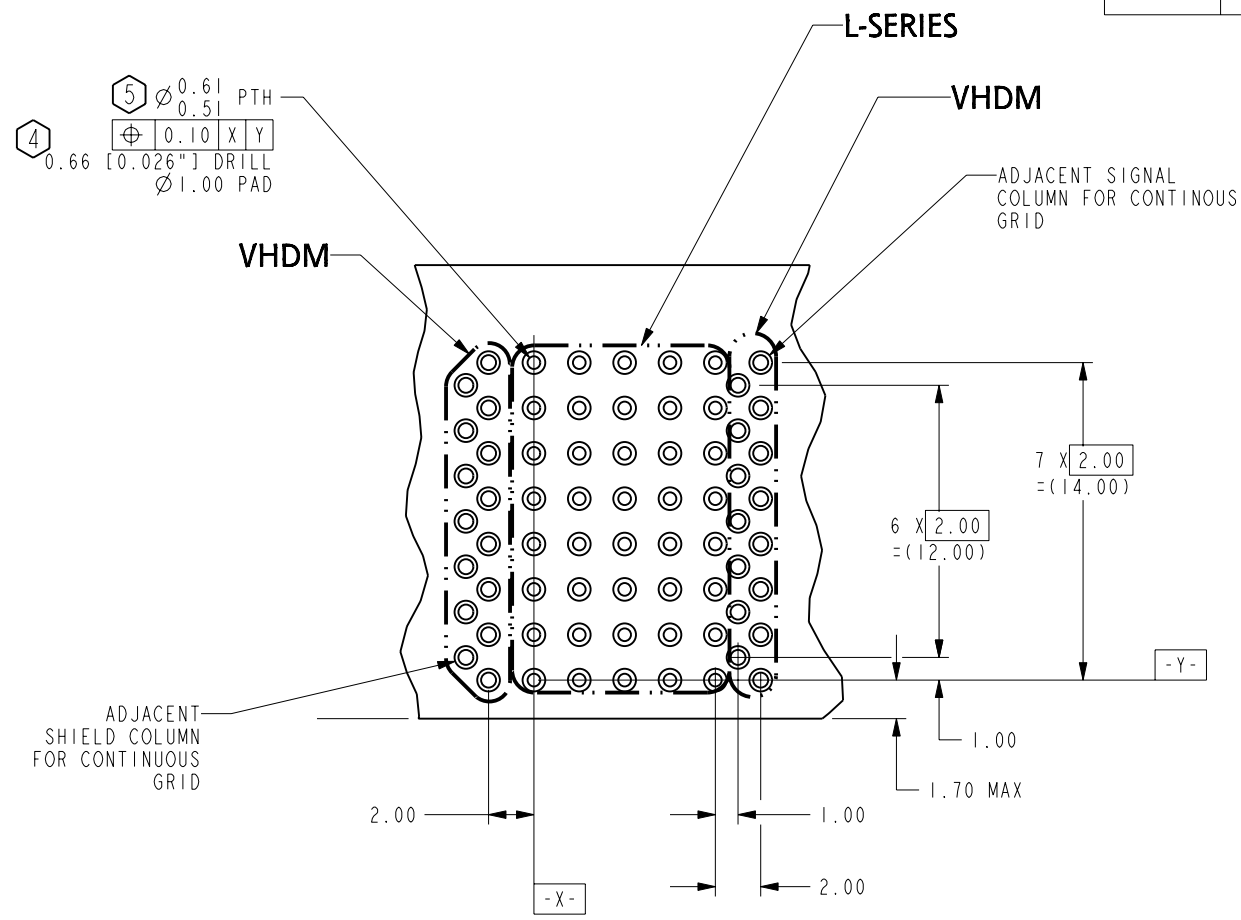
DRAWING NO. C-391-5005-500
 REV B

ProcASSEM P1033-DC-MODULE-CU 1.24
 P1033-DC-MODULE-CU .dwg 1.28

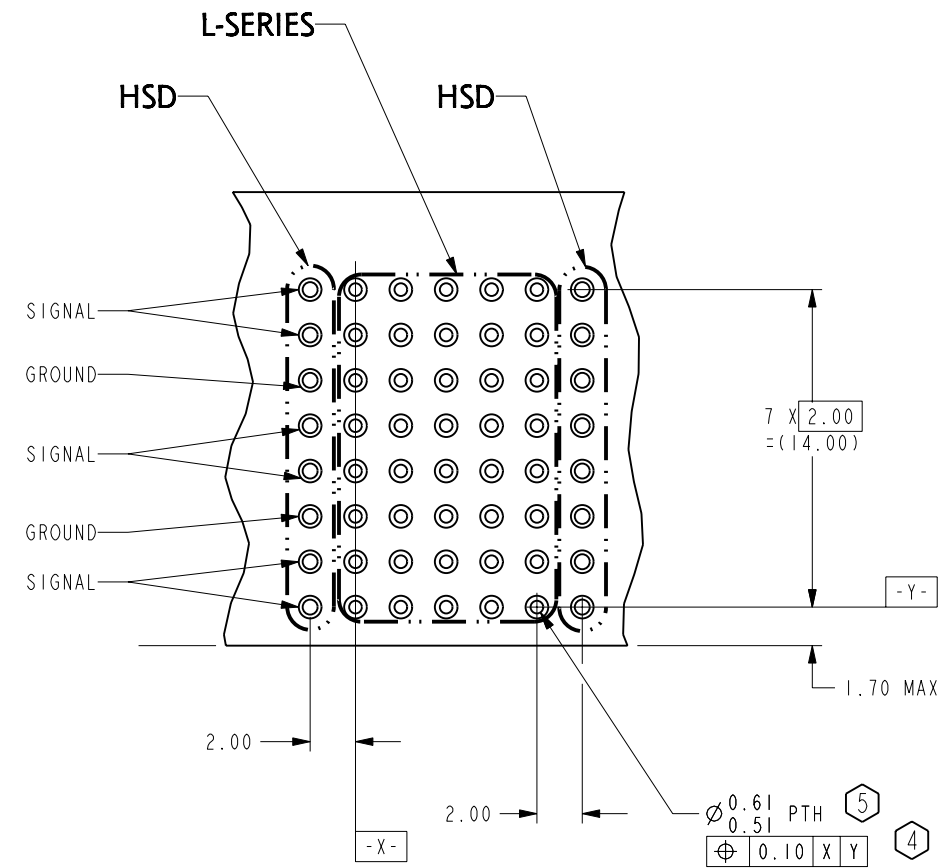
SIZE B SCALE 2/1 SHEET 1 OF 2

DRW NO.
 C-391-5005-500
 SH
 1
 REV
 B

ZONE	REV	SCR NUMBER	DESCRIPTION	BY	DATE	APPROVED
			SEE SHEET 1			



DETAIL B
L-SERIES - VHDM CONFIGURATION
DAUGHTERCARD HOLE PATTERN
CONNECTOR SIDE



DETAIL C
L-SERIES - HSD CONFIGURATION
DAUGHTERCARD HOLE PATTERN
CONNECTOR SIDE

TABLE I						
PART NUMBER	REV	NUMBER OF COLUMNS	A	B	C	CONNECTOR FINISH
391-5005-000	-	5	10.0	4	8.00	30 MICRO INCH GOLD MATING INTERFACE. Sn/Pb COMPLIANT TAILS
391-7005-000	-	5	10.0	4	8.00	30 MICRO INCH GOLD MATING INTERFACE. Sn COMPLIANT TAILS
391-4005-000	-	5	10.0	4	8.00	50 MICRO INCH GOLD MATING INTERFACE. Sn/Pb COMPLIANT TAILS
391-6005-000	-	5	10.0	4	8.00	50 MICRO INCH GOLD MATING INTERFACE. Sn COMPLIANT TAILS

TOLERANCES		DESIGN 4/3/03 D.MANTER
0.0	±0.25	DRAWN 4/3/03 M.BOSWORTH
0.00	±0.13	CHK 4/3/03 R.CHASE
0.000	±	APVD 4/3/03 D.MANTER
ANGLES	±	

Amphenol TCS
A Division of Amphenol Corporation
44 Simon Street, Nashua, NH, 03060 603.879.3000

TITLE: DAUGHTERCARD MODULE
VHDM L-SERIES 8 ROW

PART NO. SEE TABLE I

DRAWING NO. C-391-5005-500

ProeASSEM P1033-DC-MODULE-CU
P1033-DC-MODULE-CU .dwg

SIZE B SCALE 3/1 SHEET 2 OF 2

UNLESS OTHERWISE SPECIFIED DIMENSIONS ARE IN MM, DECIMAL MAKER IS PERIOD

CUSTOMER USE DRAWING

INTERPRET PER ASME Y14.5M
CODE IDENT 31413

DRW NO. C-391-5005-500
SH 2
REV B