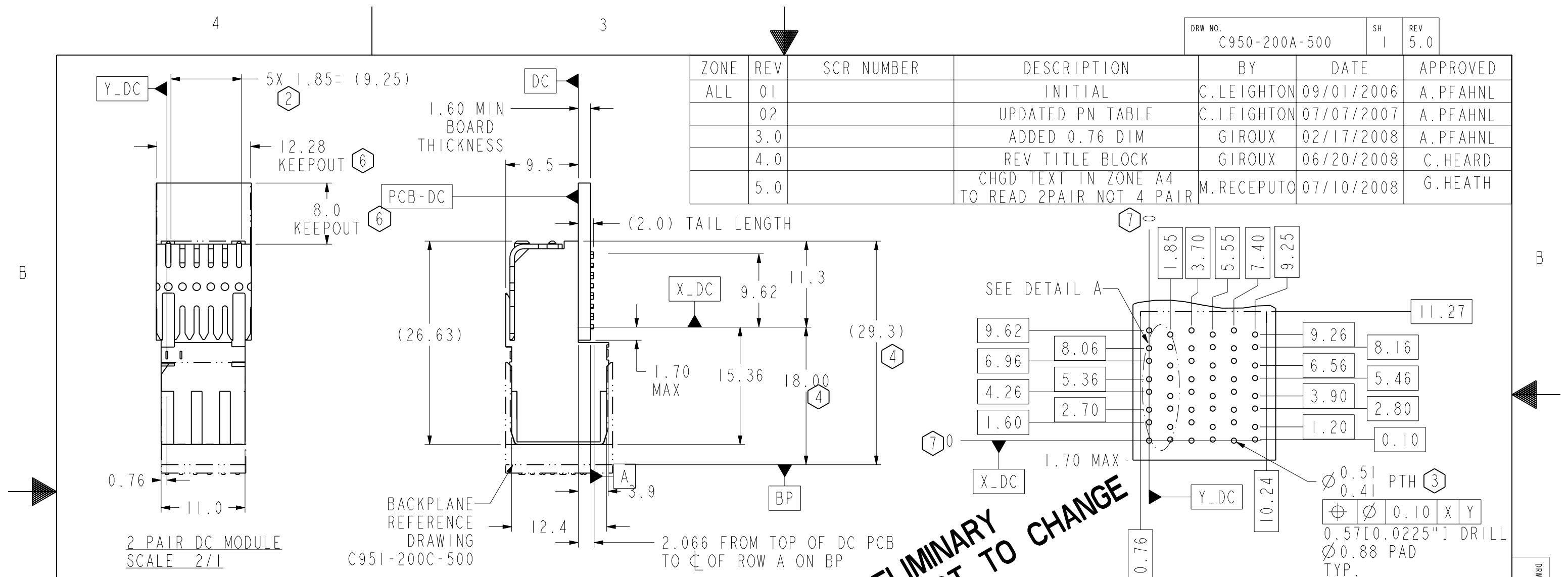


ZONE	REV	SCR NUMBER	DESCRIPTION	BY	DATE	APPROVED
ALL	01		INITIAL	C.LEIGHTON	09/01/2006	A.PFAHNL
	02		UPDATED PN TABLE	C.LEIGHTON	07/07/2007	A.PFAHNL
	3.0		ADDED 0.76 DIM	GIROUX	02/17/2008	A.PFAHNL
	4.0		REV TITLE BLOCK	GIROUX	06/20/2008	C.HEARD
	5.0		CHGD TEXT IN ZONE A4 TO READ 2PAIR NOT 4 PAIR	M.RECEPTO	07/10/2008	G.HEATH

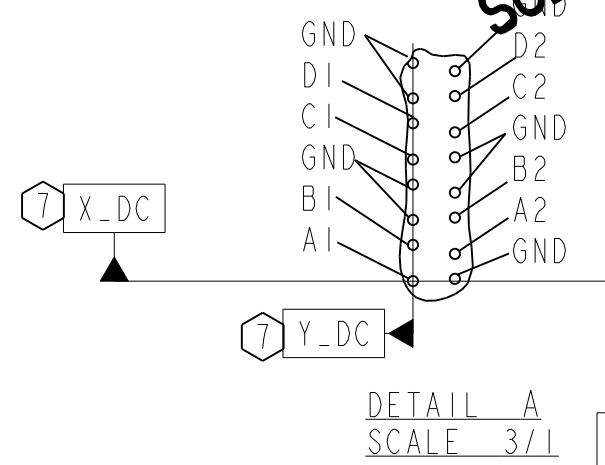


- NOTE:
- INTENDED FOR LAYOUT PURPOSE ONLY
  - FOR WAFER PITCH USE 1.85 MM NOMINAL PITCH FOR DAUGHTERCARD LAYOUT
  - STATED PAD MAY REQUIRE FILLETING. SEE TB -2149 FOR ROUTING GUIDELINES.
  - NOMINAL DIMENSIONS FOR FULLY SEATED CONECTORE.
  - REFER TO TB-2150 FOR XCEDE PRODUCT SPECIFICATIONS.
  - FOR CONNECTOR REPAIRABILITY, USE KEEP OUT ZONE.
  - DAUGHTERCARD DATUM REFERENCE

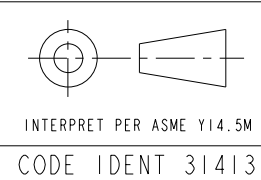
PART NUMBER	MATERIAL AND PLATING
950-200A-BIB	30 MICROINCH GOLD
950-200A-BIC	50 MICROINCH GOLD
950-200A-BID	30 MICROINCH GOLD, LEADFREE
950-200A-BIE	50 MICROINCH GOLD LEADFREE

**PRELIMINARY  
SUBJECT TO CHANGE**

DAUGHTERCARD HOLE PATTERN  
FROM CONNECTOR SIDE  
SCALE 3/1



DETAIL A  
SCALE 3/1



TOLERANCES	DESIGN 06/29/2006 J.GIROUX	<b>Amphenol TCS</b> A Division of Amphenol Corporation 44 Simon Street, Nashua, NH, 03060 603.879.3000
0.0 ±0.25	DRAWN 09/01/2006 C.LEIGHTON	
0.00 ±0.13	CHK 07/07/2007 D.MANTER	
0.000 ± -	APVD 07/07/2007 A.PFAHNL	
ANGLES ± -	TITLE 2PAIR 6POS DAUGHTERCARD MODULE XCEDE	
UNLESS OTHERWISE SPECIFIED DIMENSIONS ARE IN MM, DECIMAL MAKER IS PERIOD		PART NO. SEE TABLE I REV 02
CUSTOMER USE DRAWING		DRAWING NO. C950-200A-500 REV 5.0
SIZE B SCALE 3/1		SHEET 1 OF 1

DRW NO. C950-200A-500 SH 1 REV 5.0