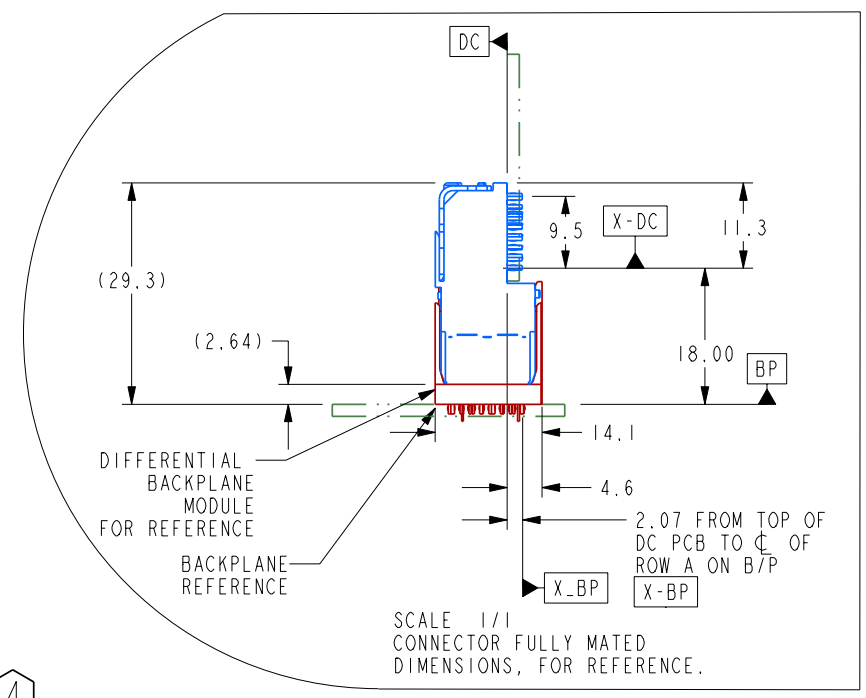
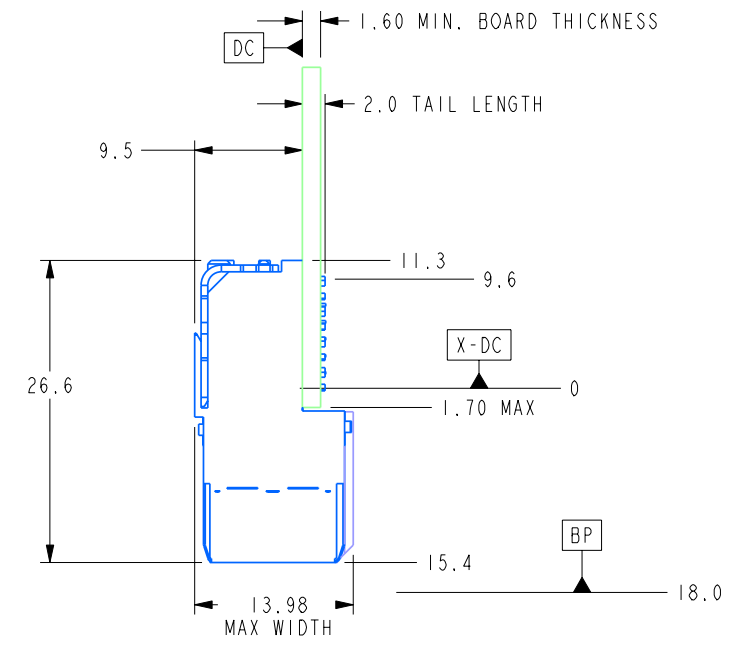
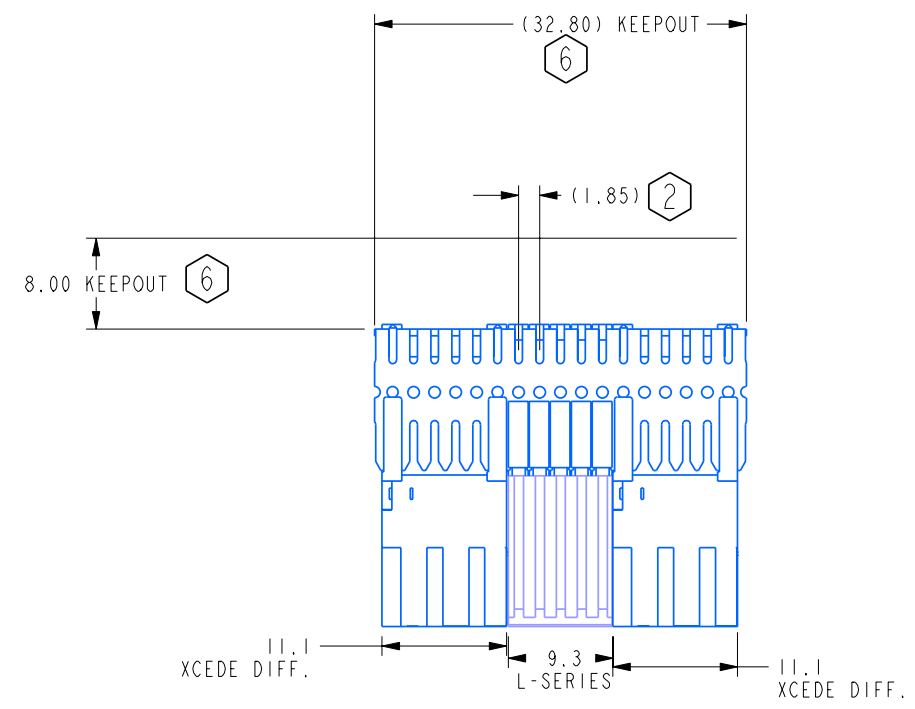
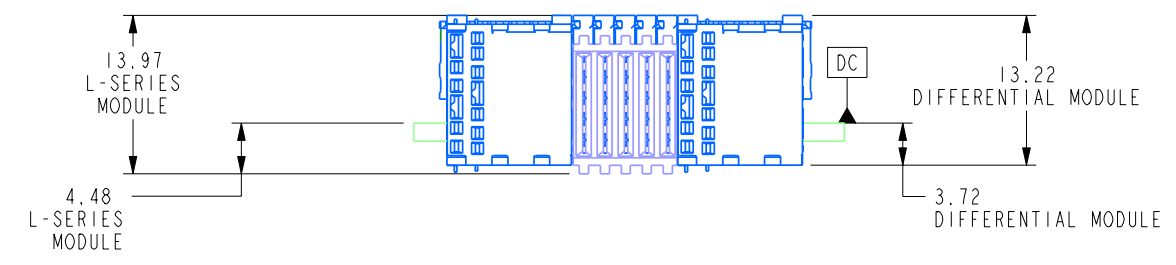
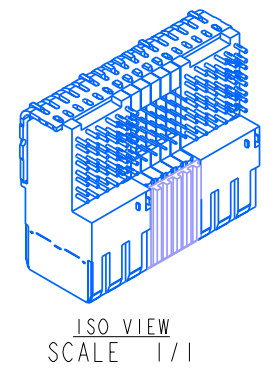


DRW NO. C950-210A-500 SH 1 REV 02

ZONE	REV	SCR NUMBER	DESCRIPTION	BY	DATE	APPROVED
	02		2.04 1.66 1.35 DIMENSIONS	C.LEIGHTON	08/07/2007	A.PFAHNL

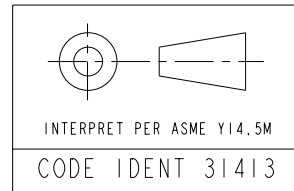


SCALE 3/2



PART #	MATERIAL AND PLATING
950-210A-B1B	HIGH PERF. Cu ALLOY PER MTS 506 AND 735 PER EGS205
950-210A-B1C	HIGH PERF. Cu ALLOY PER MTS 506 AND 732 PER EGS205
950-210A-B1D	HIGH PERF. Cu ALLOY PER MTS 506 AND 769 PER EGS205
950-210A-B1E	HIGH PERF. Cu ALLOY PER MTS 506 AND 768 PER EGS205

- NOTES:
- INTENDED FOR LAYOUT PURPOSES ONLY.
  - USE 1.85mm NOMINAL FOR DAUGHTERCARD LAYOUT.
  - STATED PAD SIZE MAY REQUIRE FILLETING. SEE TB-2149 FOR ROUTING GUIDELINES.
  - NOMINAL DIMENSIONS FOR FULLY SEATED CONNECTOR.
  - REFER TO TB-2150 FOR XCEDE PRODUCT SPECIFICATIONS.
  - FOR CONNECTOR REPAIRABILITY, USE KEEP OUT ZONE.



TOLERANCES	DESIGN
0.0 ±0.25	07/03/2007 C.LEIGHTON
0.00 ±0.13	07/05/2007 C.LEIGHTON
0.000 ± -	07/07/2007 A.PFAHNL
ANGLES ± -	07/07/2007 A.PFAHNL

UNLESS OTHERWISE SPECIFIED DIMENSIONS ARE IN MM, DECIMAL MAKER IS PERIOD

**CUSTOMER USE DRAWING**

**Amphenol TCS**  
A Division of Amphenol Corporation  
44 Simon Street, Nashua, NH, 03060 603.879.3000

TITLE: DAUGHTERCARD CONNECTOR, 2PAIR XCEDE L-SERIES

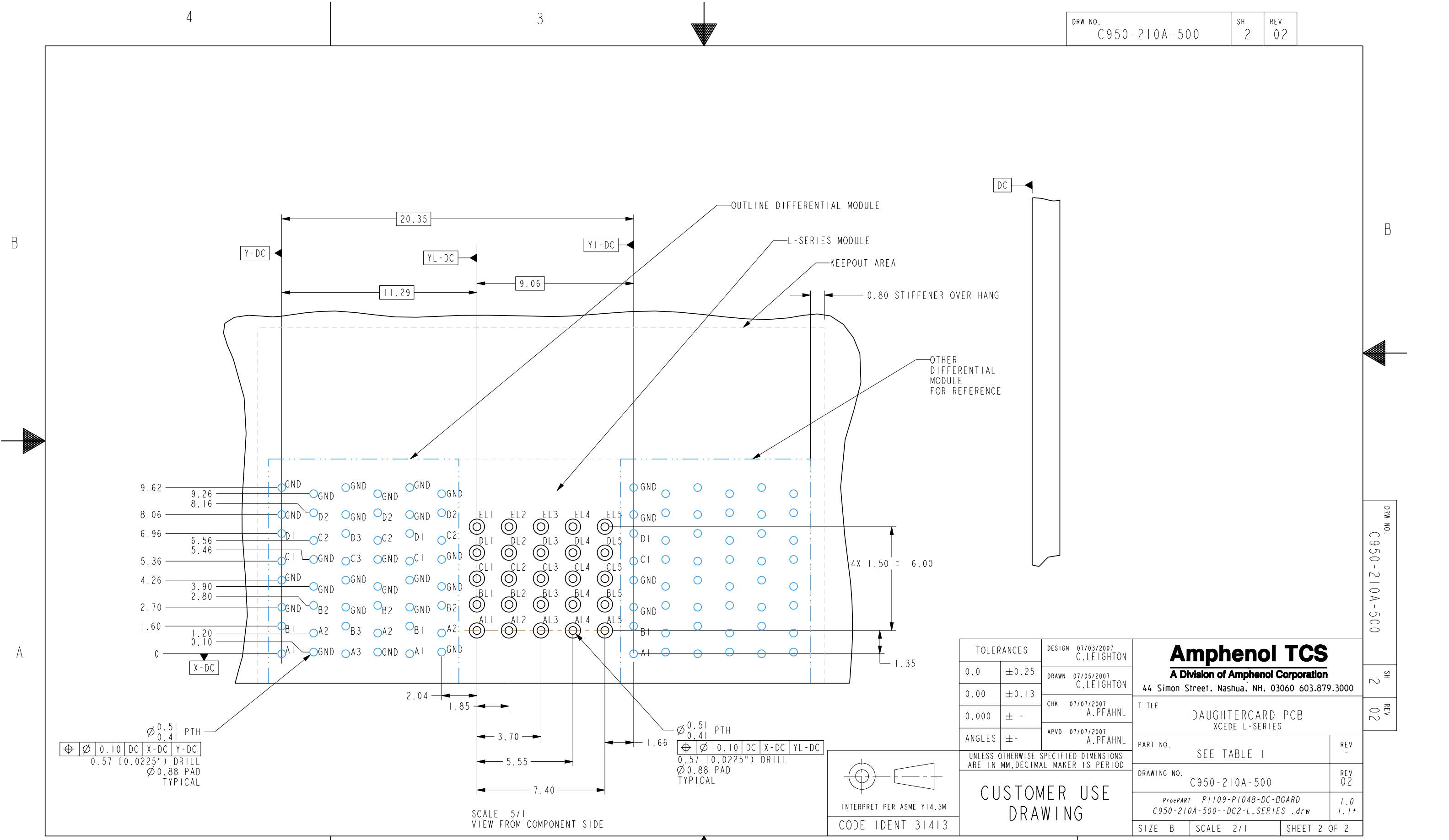
PART NO. SEE TABLE 1

DRAWING NO. C950-210A-500

ProeASSEM Q1109-CONNECTOR2-LSERIE C950-210A-500--DC2-L-SERIES.drw

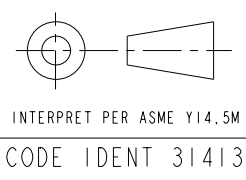
SIZE B SCALE 1/1 SHEET 1 OF 2

DRW NO. C950-210A-500 SH 1 REV 02



$\varnothing 0.51$  PTH  
 $\varnothing 0.41$   
 $\varnothing 0.10$  DC X-DC Y-DC  
 0.57 [0.0225"] DRILL  
 $\varnothing 0.88$  PAD  
 TYPICAL

$\varnothing 0.51$  PTH  
 $\varnothing 0.41$   
 $\varnothing 0.10$  DC X-DC YL-DC  
 0.57 [0.0225"] DRILL  
 $\varnothing 0.88$  PAD  
 TYPICAL



SCALE 5/1  
VIEW FROM COMPONENT SIDE

TOLERANCES		DESIGN 07/03/2007 C. LEIGHTON
0.0	$\pm 0.25$	DRAWN 07/05/2007 C. LEIGHTON
0.00	$\pm 0.13$	
0.000	$\pm -$	CHK 07/07/2007 A. PFAHNL
ANGLES	$\pm -$	APVD 07/07/2007 A. PFAHNL

UNLESS OTHERWISE SPECIFIED DIMENSIONS ARE IN MM, DECIMAL MAKER IS PERIOD

**CUSTOMER USE  
DRAWING**

<b>Amphenol TCS</b> A Division of Amphenol Corporation 44 Simon Street, Nashua, NH, 03060 603.879.3000		SH 2
		REV 02
TITLE DAUGHTERCARD PCB XCEDE L-SERIES		REV -
PART NO. SEE TABLE I	REV 02	
DRAWING NO. C950-210A-500	REV 1.0 1.1+	
ProePART P1109-P1048-DC-BOARD C950-210A-500--DC2-L-SERIES .drw		
SIZE B	SCALE 2/1	SHEET 2 OF 2

DRW NO.  
C950-210A-500

SH  
2  
REV  
02

4

3

2

1

4

3

B

B

A