

ZONE	REV	SCR NUMBER	DESCRIPTION	BY	DATE	APPROVED
	01		INITIAL	C. LEIGHTON	01/10/2007	A. PFAHNL

9 5 1 - 2 X X X - X 0 X

XCEDE L-SERIES BACKPLANE MODULE MALE STANDARD:
CHOICE OF OPEN, LEFT POLARIZING GUIDE OR RIGHT POLARIZING GUIDE
USING FIFTH DIGIT OF PART NUMBER

LETTER
OPEN (SEE SHEET2: 5 POS)
0 (ZERO)

LETTER	MATERIAL AND PLATING
B	30 MICROINCH GOLD PLATING ON MATING SURFACE
C	50 MICROINCH GOLD PLATING ON MATING SURFACE
D	30 MICROINCH GOLD PLATING ON MATING SURFACE. (LEAD FREE)
E	50 MICROINCH GOLD PLATING ON MATING SURFACE. (LEAD FREE)

COLUMNS L-SERIES MOD.
1A 5 POSITION

NUMBER	WIPE LENGTH
1	2 mm
2	3 mm

9 5 2 - 2 X X X - X X X

THE LAST FOUR DIGITS ARE SEQUENTIAL

XCEDE CUSTOM-LOADED L-SERIES
BACKPLANE CONNECTOR (MALE, LEADFREE)

SHROUD TYPE
0 OPEN

COLUMNS L-SERIES MOD.
1 5 POSITION
2 10 POSITION

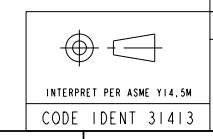
9 5 3 - 2 X X X - X X X

THE LAST FOUR DIGITS ARE SEQUENTIAL

XCEDE CUSTOM-LOADED L-SERIES
BACKPLANE CONNECTOR (MALE, LEAD)

SHROUD TYPE
0 OPEN

COLUMNS L-SERIES MOD.
1 5 POSITION
2 10 POSITION



TOLERANCES	DESIGN 01/10/2007 C. LEIGHTON	Amphenol TCS A Division of Amphenol Corporation 44 Simon Street, Nashua, NH, 03060 603.879.3000	TITLE	BACKPLANE CONNECTOR, 2PAIR XCEDE L-SERIES
0.0 ±0.25	DRAWN 01/10/2007 C. LEIGHTON		PART NO.	SEE PART NUMBER TREE
0.00 ±0.13	CHK 01/10/2007 A. PFAHNL		DRAWING NO.	C951-201A-500
0.000 ± -	APVD 01/10/2007 A. PFAHNL		PROJ	PI109-PI048-BP-BOARD C951-201A-500-BP2-L-SERIES .drw
ANGLES ± -	UNLESS OTHERWISE SPECIFIED DIMENSIONS ARE IN MM, DECIMAL MAKER IS PERIOD.	CUSTOMER USE DRAWING		REV
		SCALE	1/1	1, 2*
		SHEET	1 OF 2	***

DRW NO. C951-201A-500 SH 1 REV 01

