

ZONE	REV	SCR NUMBER	DESCRIPTION	BY	DATE	APPROVED
ALL	01		INITIAL	C. LEIGHTON	07/07/2007	A. PFAHNL

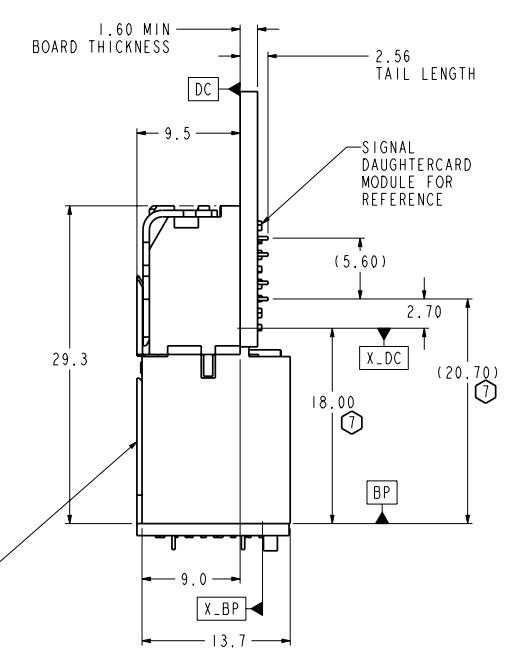
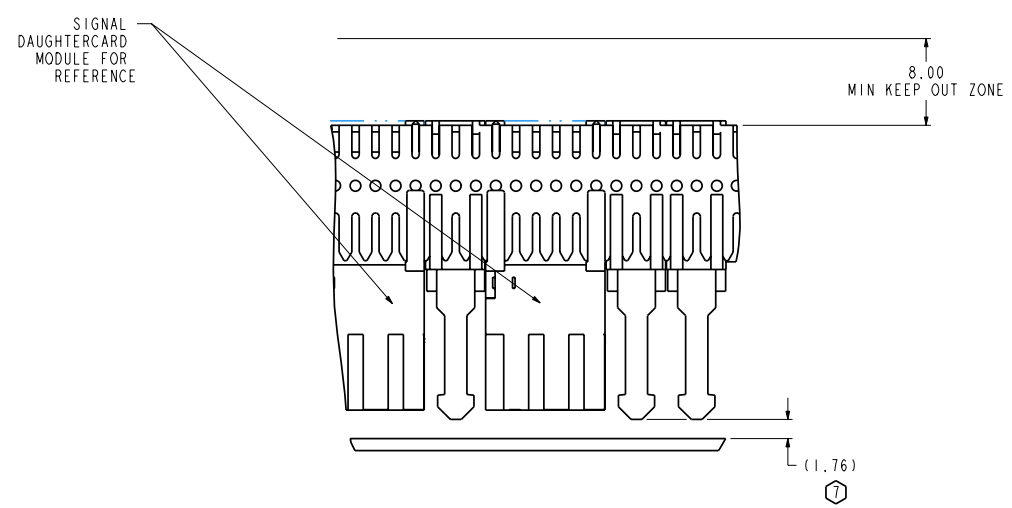
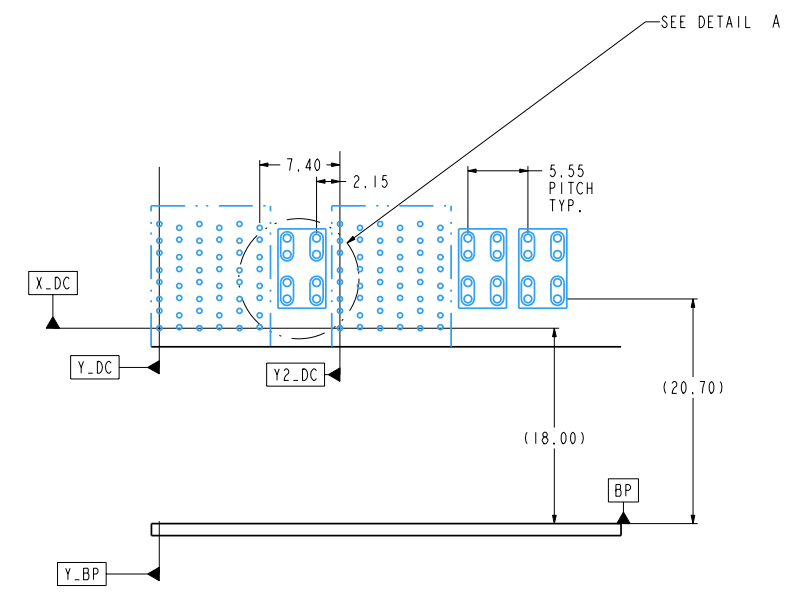
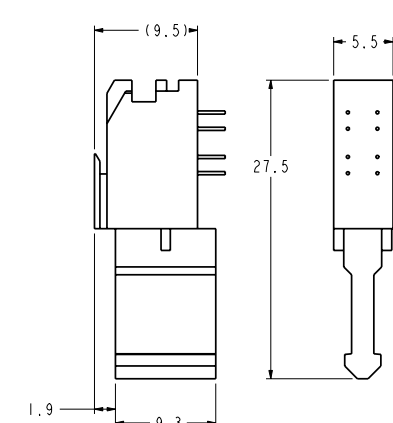
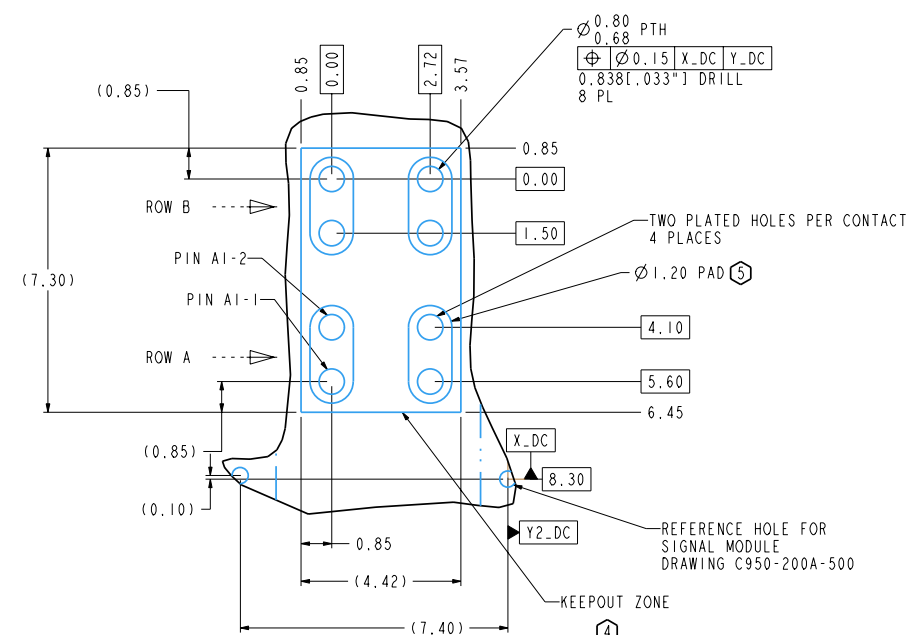
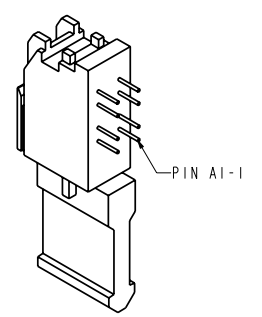
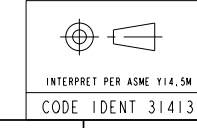


TABLE I	
PART #	MATERIAL AND PLATING
956-2000-A1B	HIGH PERF. CU ALLOY PER MTS 506 AND 735 PER EGS205
956-2000-A1C	HIGH PERF. CU ALLOY PER MTS 506 AND 732 PER EGS205
956-2000-A1D	HIGH PERF. CU ALLOY PER MTS 506 AND 769 PER EGS205
956-2000-A1E	HIGH PERF. CU ALLOY PER MTS 506 AND 768 PER EGS205



- 8 FOR CONNECTOR REPAIRABILITY, USE KEEP OUT ZONE.
 - 7 NOMINAL SEATED DIMENSION.
 - 6. REFER TO TB-2150 FOR XCEDE PRODUCT SPECIFICATIONS AND TB-XXXX FOR POWER APPLICATION GUIDE.
 - 5 STATED PAD SIZE MAY REQUIRE FILLETING. SEE TB-XXXX FOR ROUTING GUIDELINES.
 - 4 NO SURFACE TRACES ALLOWED IN KEEP OUT ZONE.
 - 3 REMOVED
 - 2 USE 5.55 mm NOMINAL FOR DAUGHTERCARD LAYOUT.
- 1 CORRESPONDING BP DRAWING : C958-2900-500
- NOTES:

DETAIL A
SCALE 10/1



TOLERANCES	DESIGN 08/13/03 R_CHIFFY	Amphenol TCS A Division of Amphenol Corporation 44 Simon Street, Nashua, NH, 03060 603.879.3000	
0.0	±0.25	DRAWN 07/07/2007 C. LEIGHTON	TITLE DAUGHTERCARD POWER MODULE XCEDE 2 PAIR
0.00	±0.13	CHK 07/07/2007 A. PFAHNL	PART NO. SEE TABLE I
0.000	±	APVD 07/07/2007 A. PFAHNL	REV 01
UNLESS OTHERWISE SPECIFIED DIMENSIONS ARE IN MM, DECIMAL MAKER IS PERIOD.		DRAWING NO. C956-2000-500	
CUSTOMER USE DRAWING		Rev PART SI-P1034-DC-POWER C956-2000-500--DC2-POWER .dwm 1.7 1.1+	
INTERPRET PER ASME Y14.5M		SIZE D SCALE 3/1 SHEET 1 OF 1	
CODE IDENT 31413			

DRW NO. C956-2000-500 SH 1 REV 01